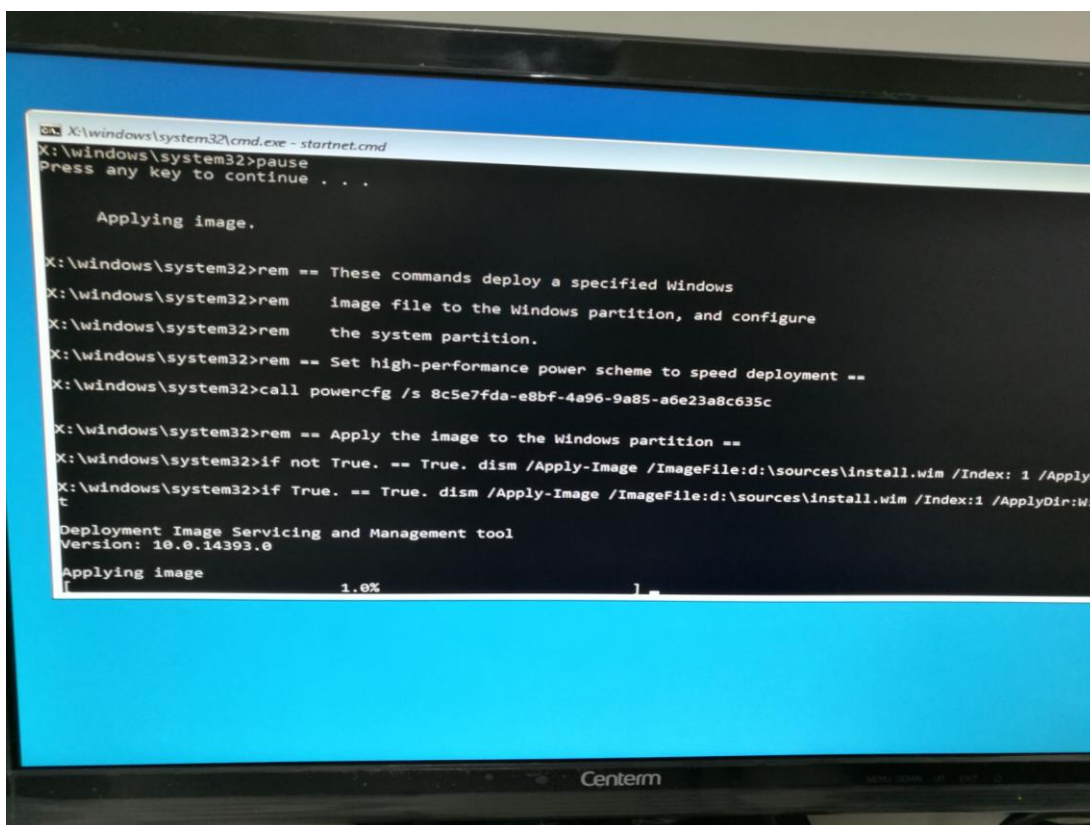


Windows 10 installation guide (X86).

1. Download OS from the link:
 TC100: <https://mega.nz/#!7hFIVayK!HP2A5ktgR-BL9j-MjSm47Lf21zzXqfcfVmTn87DbQtC>
 TC120: <https://mega.nz/#!luktJ4!!-CIMbB82UhtjqNid5AqkEdd5YoKeZNOaltwtqgo5G50>
 TC300:
2. Choose an empty USB drive (more than 8GB), rename it "WINPE" and format it into FAT32 format.
3. Unzip the "ISO" OS downloaded, and copy all folders and files into root directory.
4. Insert ready USB drive, power on device, Press F7 to choose boot from USB. The OS image will apply automatically.

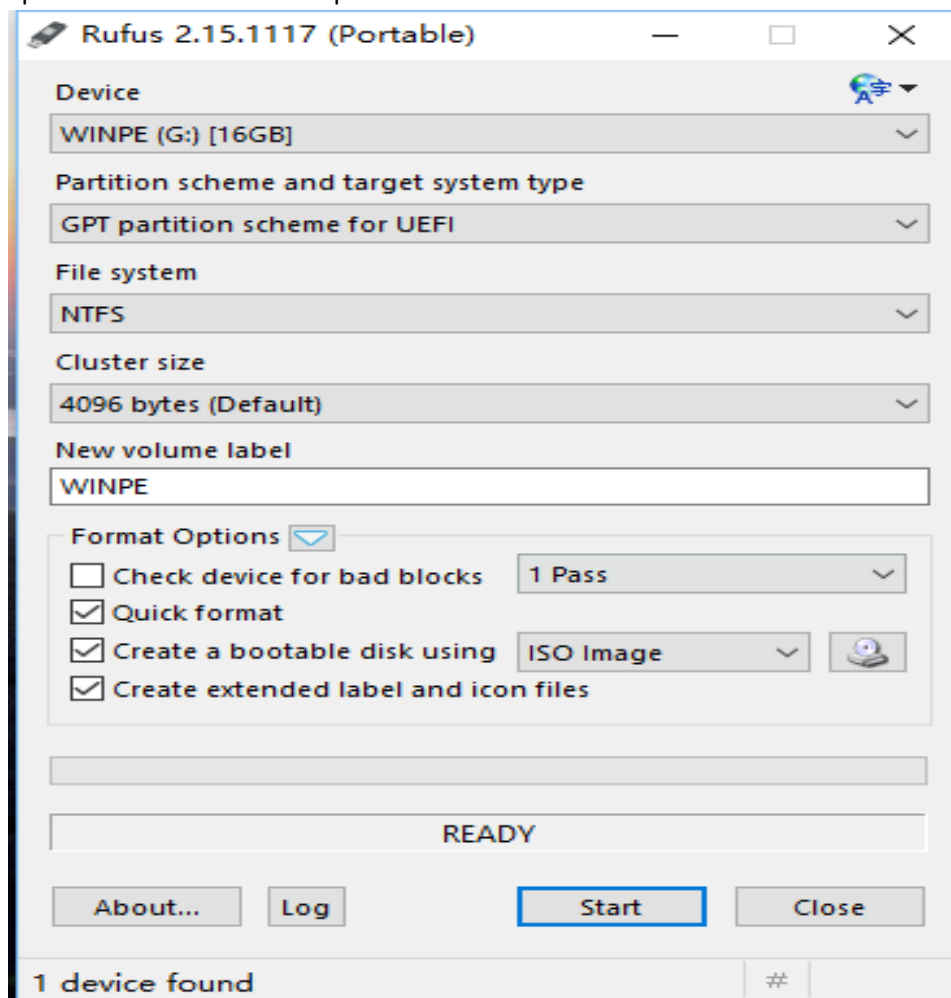


After image successfully applied, the device will power off.

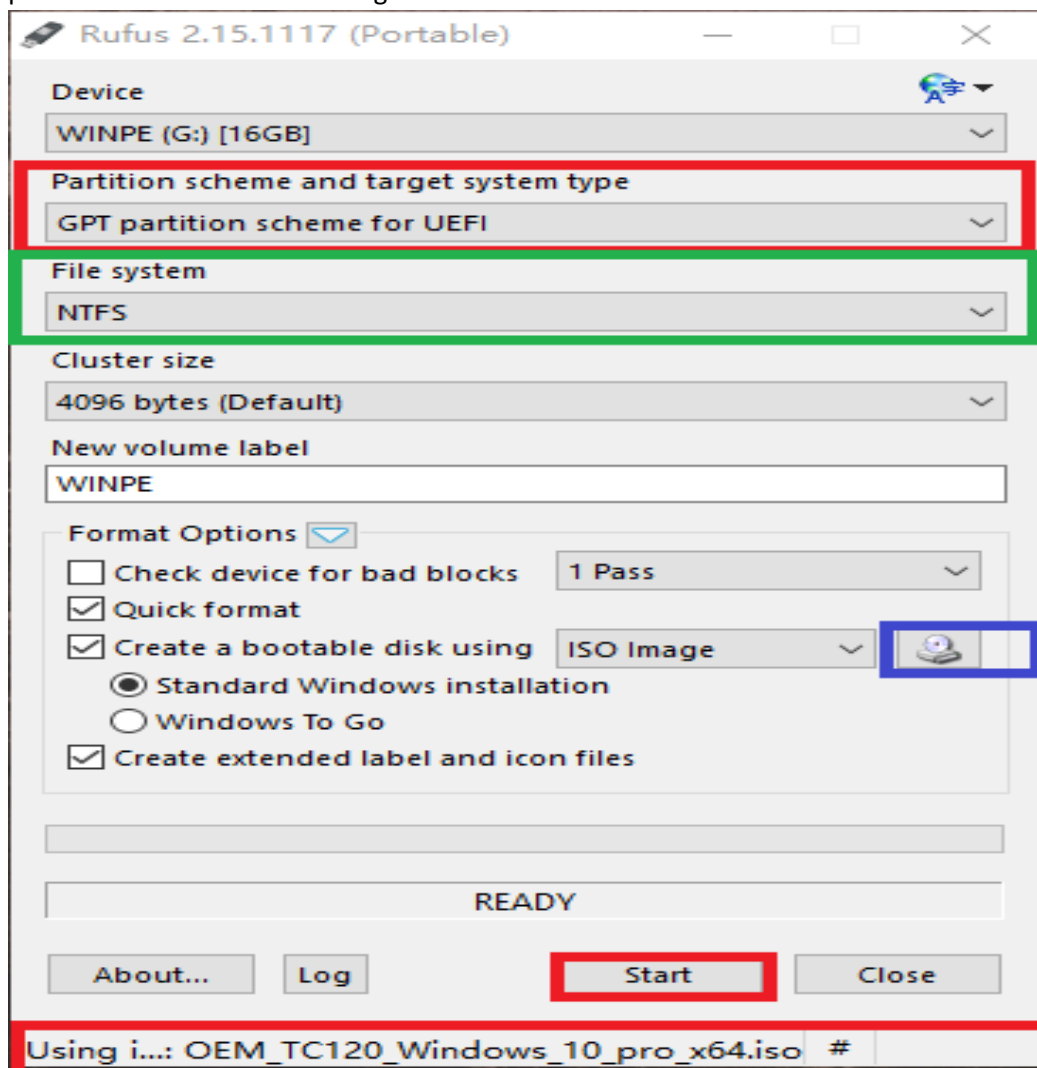
5. Remove USB drive, power on device again. The image will be unfolded automatically. Follow Microsoft instruction, your windows will be all set easily and ready for use.

Windows 10 installation guide (X64).

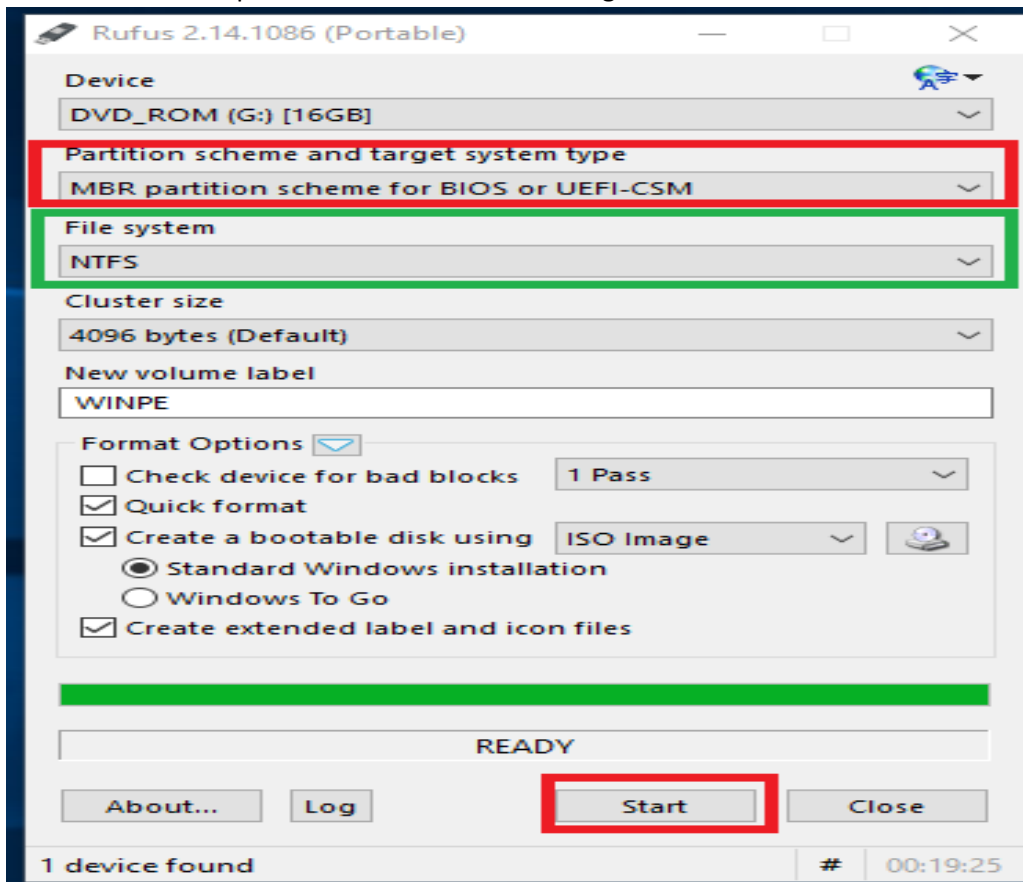
1. Download OS image (.iso) from the link:
TC120: https://mega.nz/#!Xo8wRaBZ!UU_zu1hRtOG2inhs11iiYXvtUfeizyZec6acLlqxp3o
TC300: <https://mega.nz/#!vw9xmZJZ!Nh15qGR6Z3jSBkG-zvOFPNRaMwoe0YF6vFvwwCEgVAK>
2. Download our update tool "Rufus.exe" from the below link:
<https://mega.nz/#!n9E2WQpT!IZctDKKv8ItA5Lf9uPuLry8SAbeqo2IXrgTQ19UQHsA>
3. Open "Rufus.exe" as below picture:



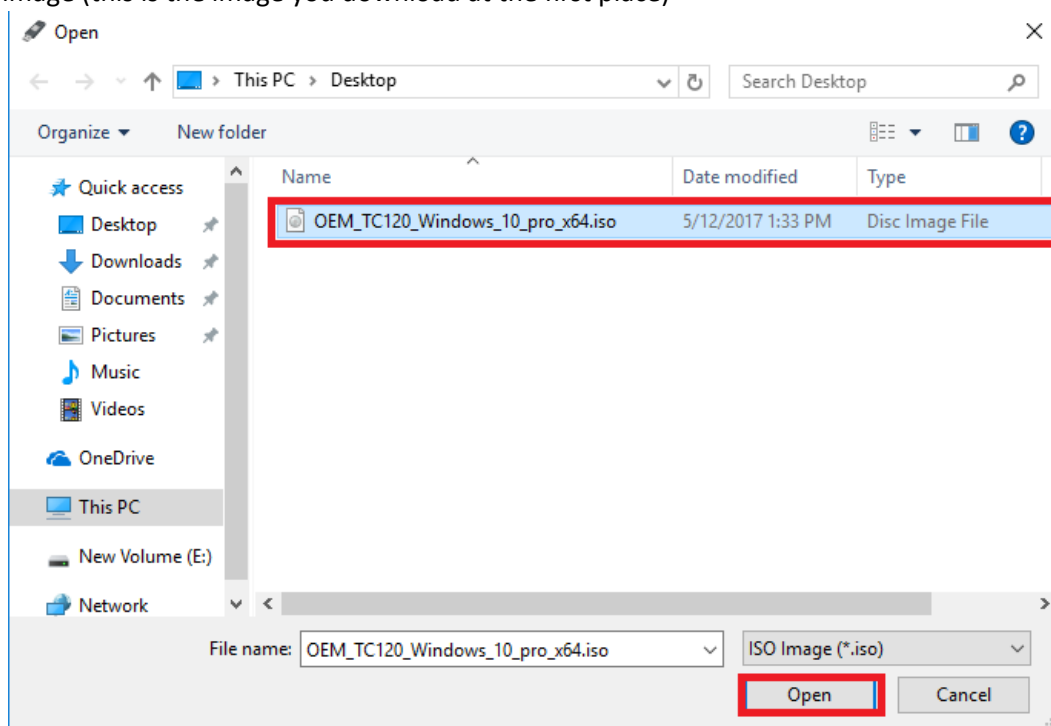
4. If TC120 device, choose “GPT partition scheme for UEFI” and some other choice as shown in picture below mark in red and green:



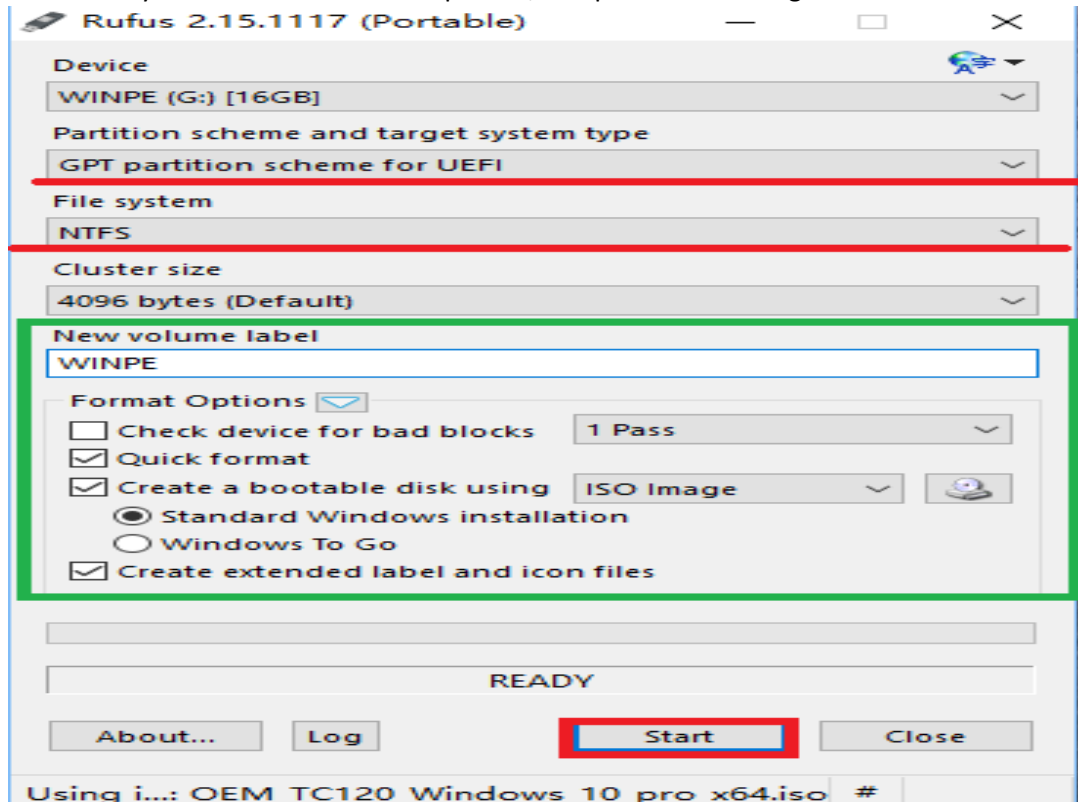
If TC300 device, choose “**MBR partition scheme for BIOS or UEFI-CSM**” and some other choice as shown in picture below mark in red and green:



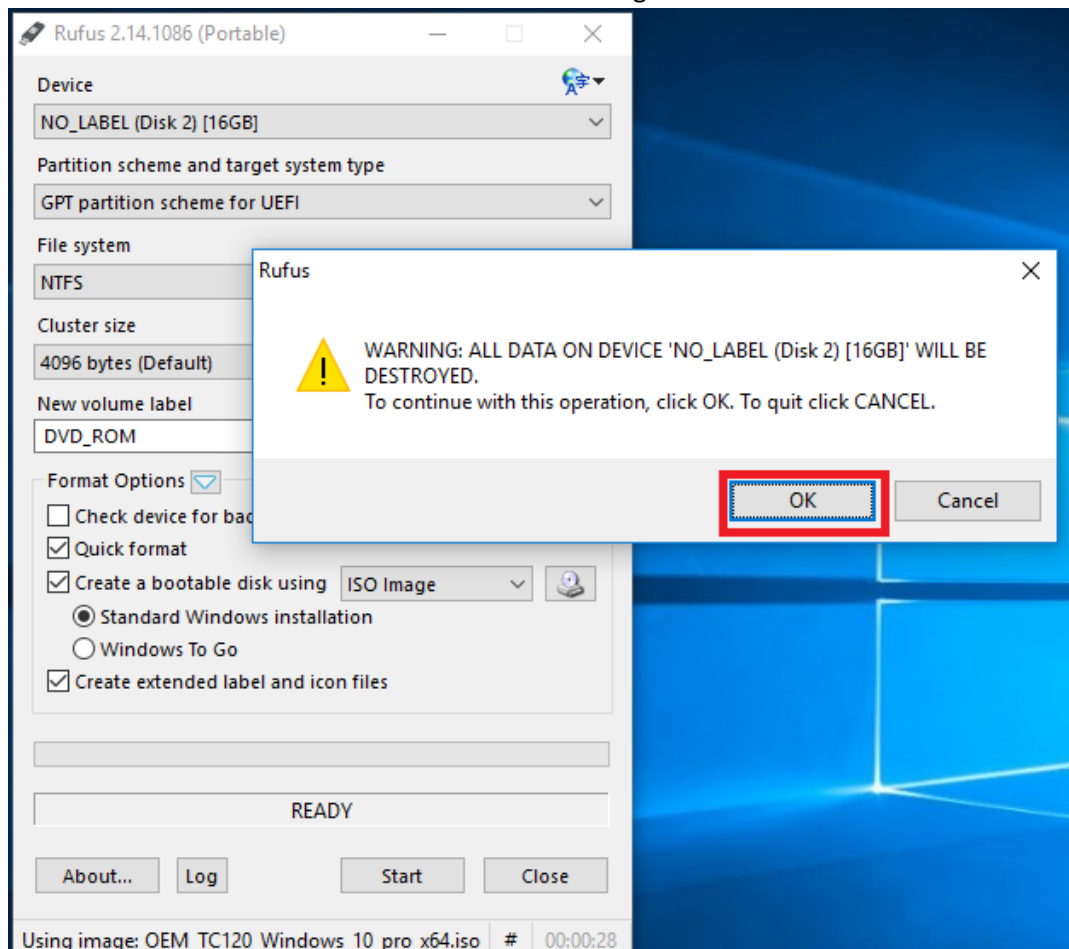
5. After all correct choice as same as red and green, click the button to choose the original image (this is the image you download at the first place)



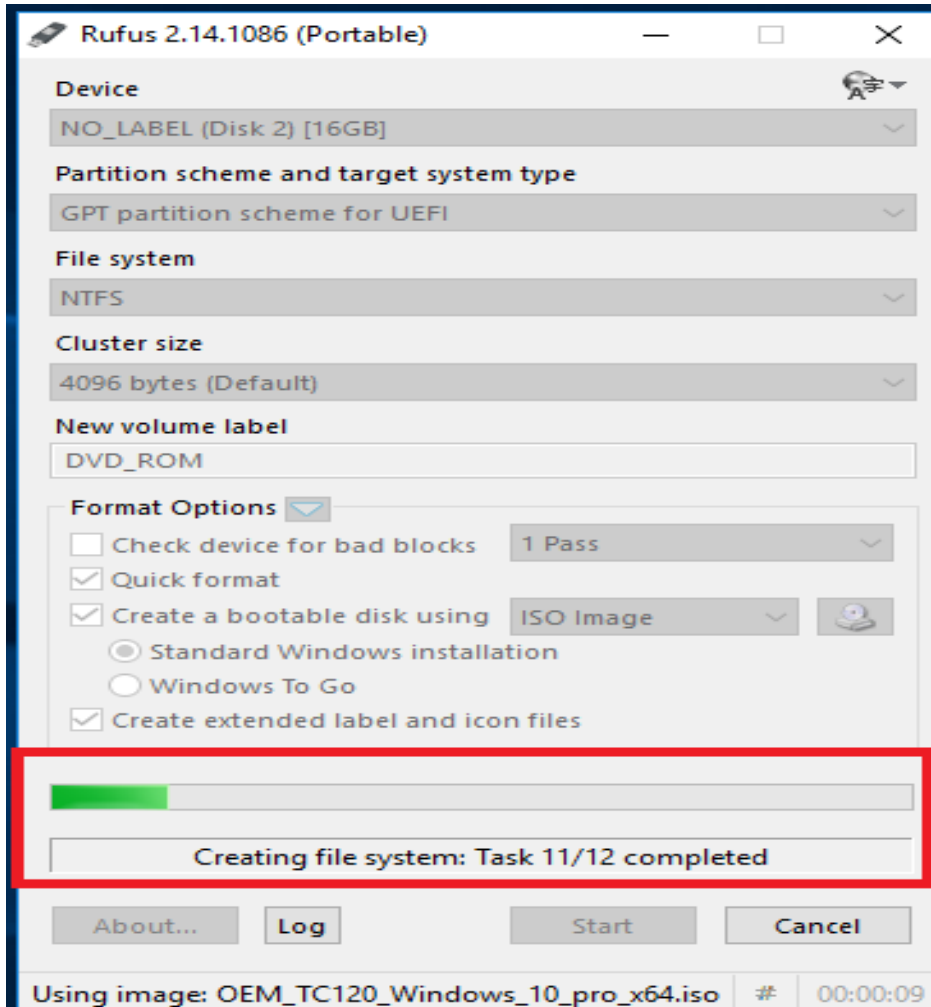
6. Make sure your choice is as same as picture, and press start to begin.



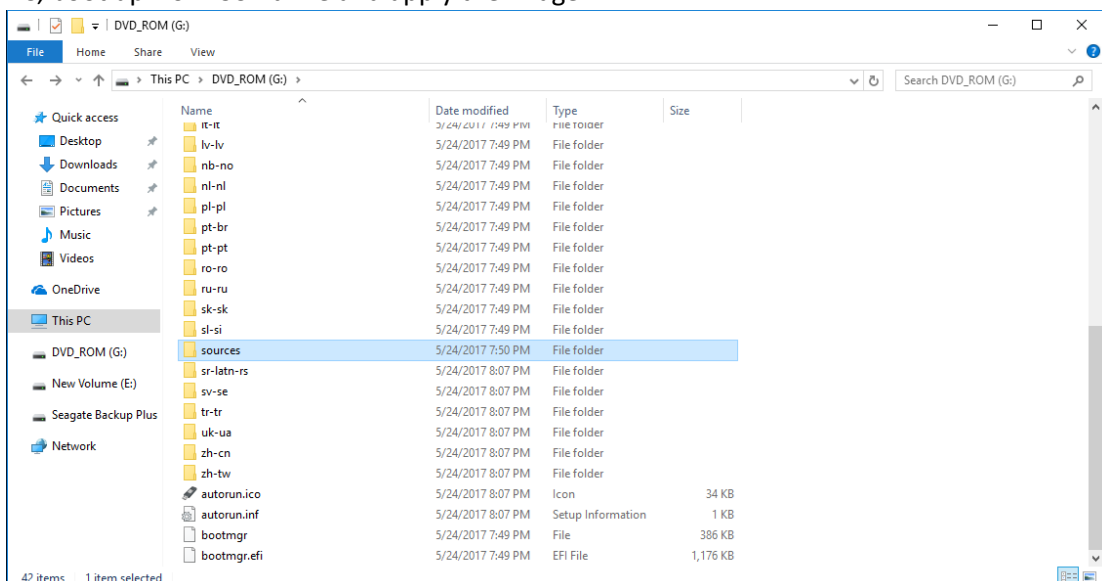
7. Press start and then OK to continue to make the image



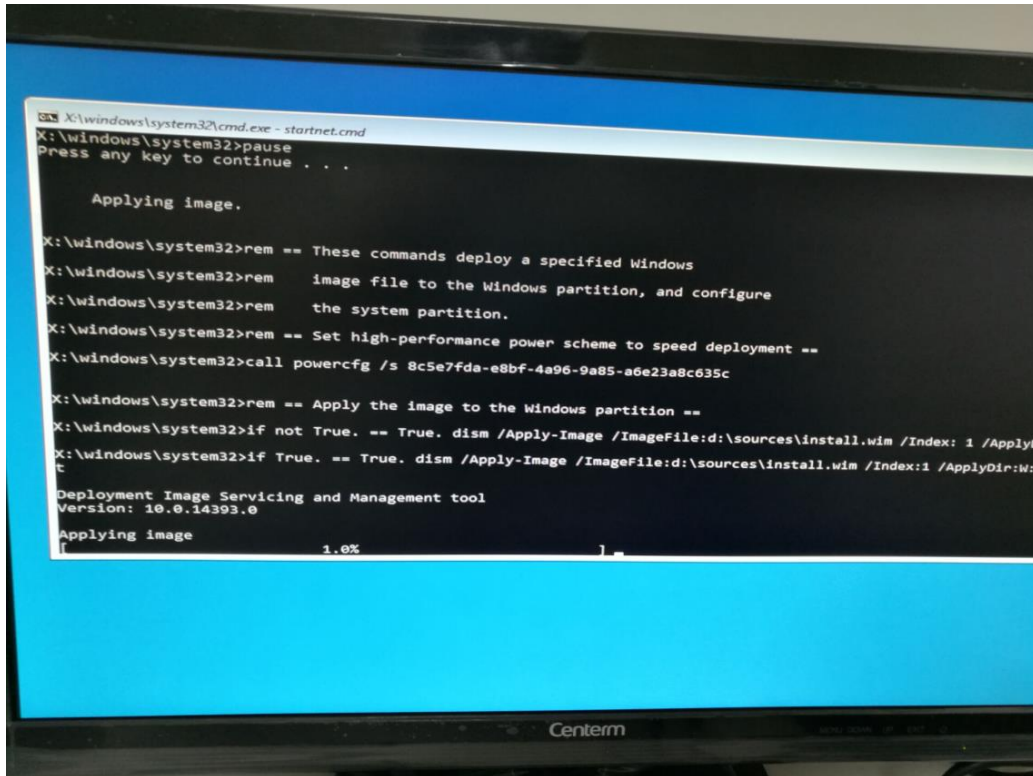
8. As below, image is creating, after that use the USB drive with image.



9. After that image is ready in the USB drive (as picture below), insert USB drive into the mini PC, boot up from USB drive and apply the image.



10. After 100% image applied, devices will shut down automatically.



11. Remove USB drive, power on device again. The image will be unfolded automatically. Follow Microsoft instruction, your windows will be all set easily and ready for use.